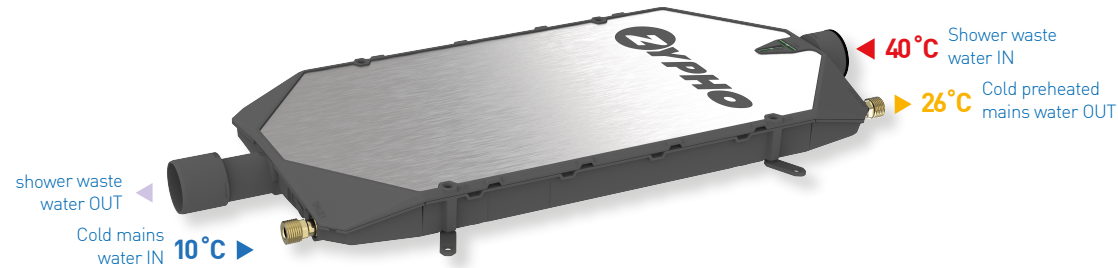


TECHNICAL SPECIFICATIONS

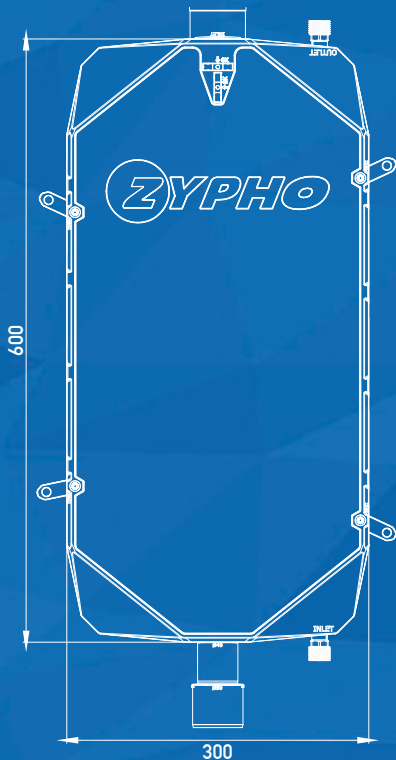
Slim 50
ZYSL50D10SV



Zypho® Slim transfers heat from the shower's wastewater [40°C] to the incoming cold mains [10°C] supply. This preheated water (up to 26°) is then directed to either the shower mixer, the water heater or preferably both - reducing energy consumption up to 50% - Improving Energy Efficiency.



ZYPHO® Slim DIMENSIONS



Zypho® Slim requires no maintenance and can be installed in new or retrofitted buildings. Zypho® Slim has several installation options with special and efficient waste trap filters:

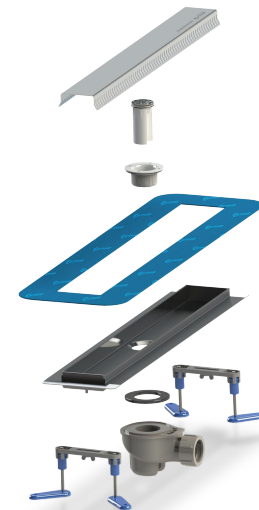
ZYPHO® SLIM RANGE



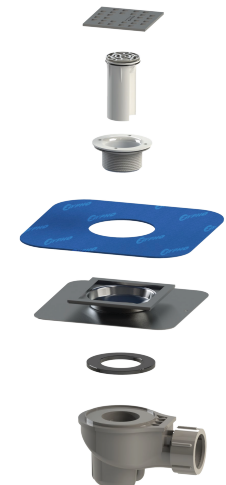
ZYPHO® SLIM 50
REF. ZYSL50D10SV
SHOWER TRAY



ZYPHO® SLIM 50
REF. ZYSL50D10BV
BATHTUB



ZYPHO® SLIM 50
REF. ZYSL5010L7/8/9
LINEAR DRAIN



ZYPHO® SLIM 50
REF. ZYSL50D10L
SQUARE DRAIN

TECHNICAL CHARACTERISTICS

Description	Units	Value
Slim 50		
Temperature Range	C°	0-60
Drinking water maximum pressure	bar	6.0
Drained water maximum flow rate (1)	L/min	25.0
Drained water recommended flow rate	L/min	12.5
Heat exchanger material (2)	-	Copper
Body Material	-	PP

(1): Value is assuming 2cm water level. Depending on the installation, the flow rate may change.

(2): Double-wall Heat Exchanger as requested by EN1717.

PERFORMANCE & EFFICIENCY

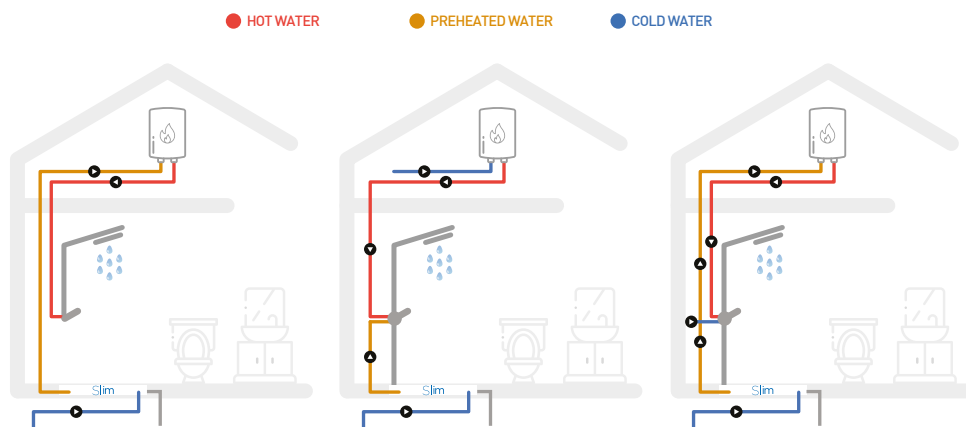
Slim 50		
Flow Rate	Efficiency	Pressure drop
5.8 L/min	52%	0.1 bar
9.2 L/min	49%	0.3 bar
12.5 L/min	45%	0.5 bar

Tolerances: Efficiency ± 3 p.p. | Pressure drop ± 0.2 bar.

ZYPHO SYSTEMS ARE CERTIFIED AND PATENTED



[IN PROGRESS]



1. The preheated water is transferred to the tap and the boiler.
The most efficient configuration.

2. The preheated water is transferred to the tap only.

3. The preheated water is transferred to the boiler only.

LEGIONELLA PREVENTION

Zypho® iZign minimizes Legionella-related risks:

- Drain water does not stall inside the unit because the water is fully drained out at the end of every shower.
- After every shower the preheated water immediately cools below 25 ° C, which is a safe temperature according to WHO and European Working Group for Legionella Infections.
- Since the unit is installed relatively close to the shower mixer, the distance between the unit and the shower trap is minimized.

MAINTENANCE

Zypho® iZign Heat Exchangers have been designed to require no maintenance efforts. They must be installed with the shower drain provided. Periodic cleaning is recommended to optimise energy exchange. Use a non-corrosive drain cleaner or a water jet. We recommend our water jet brush ZYMN00000J1.